



Rizzetta & Company

# **Waters Edge Community Development District**

---

**Board of Supervisor's Meeting  
April 25, 2024**

**District Office:  
5844 Old Pasco Road, Suite 100  
Wesley Chapel, Florida 33544  
813.994.1001**

[www.watersedgeccd.org](http://www.watersedgeccd.org)

# **WATERS EDGE COMMUNITY DEVELOPMENT DISTRICT**

The Waters Edge Clubhouse  
9019 Creedmoor Lane, New Port Richey, FL 34654

[www.watersedgecdd.org](http://www.watersedgecdd.org)

<b>Board of Supervisors</b>	Teri Geney George Anastasopoulos Gabriel Papadopoulos Timothy Haslett Jason Peterson	Chairman Vice Chairman Assistant Secretary Assistant Secretary Assistant Secretary
<b>District Manager</b>	Matthew Huber	Rizzetta & Company, Inc.
<b>District Counsel</b>	John Vericker	Straley Robin & Vericker
<b>District Engineer</b>	Frank Nolte	Stantec

**All cellular phones must be placed on mute while in the meeting room.**

The Audience Comment portion of the agenda is where individuals may make comments on matters that concern the District. Individuals are limited to a total of three (3) minutes to make comments during this time.

Pursuant to provisions of the Americans with Disabilities Act, any person requiring special accommodations to participate in this meeting / hearing / workshop is asked to advise the District Office at least forty-eight (48) hours before the meeting / hearing / workshop by contacting the District Manager at (813) 933-5571. If you are hearing or speech impaired, please contact the Florida Relay Service by dialing 7-1-1, or 1-800-955-8771 (TTY) 1-800-955-8770 (Voice), who can aid you in contacting the District Office.

A person who decides to appeal any decision made at the meeting/hearing/workshop with respect to any matter considered at the meeting/hearing/workshop is advised that person will need a record of the proceedings and that accordingly, the person may need to ensure that a verbatim record of the proceedings is made including the testimony and evidence upon which the appeal is to be based.

# WATER'S EDGE COMMUNITY DEVELOPMENT DISTRICT

District Office · Wesley Chapel, Florida · (813) 994-1001  
Mailing Address – 3434 Colwell Avenue, Suite 200, Tampa, Florida 33614  
[www.watersedgecdd.org](http://www.watersedgecdd.org)

Board of Supervisors  
Water's Edge Community  
Development District

4/18/2024

## AGENDA

Dear Board Members:

The regular meeting of the Board of Supervisors of the Water's Edge Community Development District will be held on **Thursday, April 25, 2024 at 3:30 p.m. at the Water's Edge Clubhouse, located at 9019 Creedmoor Lane, New Port Richey, FL 34654**. The following is the agenda for this meeting.

1. **CALL TO ORDER/ROLL CALL**
2. **AUDIENCE COMMENTS ON AGENDA ITEMS**
3. **STAFF REPORTS**
  - A. Aquatics Manager Monthly Report..... Tab 1
  - B. District Engineer Report..... Tab 2
  - C. District Counsel
  - D. PSA Inspection Reports
    1. April Report ..... Tab 3
  - E. District Manager
    1. Review of Financial Statement ..... Tab 4
4. **BUSINESS ITEMS**
  - A. Consideration of Sprinkler Solutions Pump Station Preventative Maintenance Proposal ..... Tab 5
  - B. Consideration of Resolution 2024-01, Redesignating Officers of the District..... Tab 6
5. **BUSINESS ADMINISTRATION**
  - A. Consideration of Minutes of the Board of Supervisors' Regular Meeting held on March 28, 2024 ..... Tab 7
  - B. Ratification of Operation and Maintenance Expenditures For March 2024..... Tab 8
6. **AUDIENCE COMMENTS AND SUPERVISOR REQUESTS**
7. **ADJOURNMENT**

We look forward to seeing you at the meeting. In the meantime, if you have any questions, please do not hesitate to call us at (813) 933-5571.

Sincerely,

*Matthew Huber*

Matthew Huber  
District Manager

# **Tab 1**



# MONTHLY REPORT

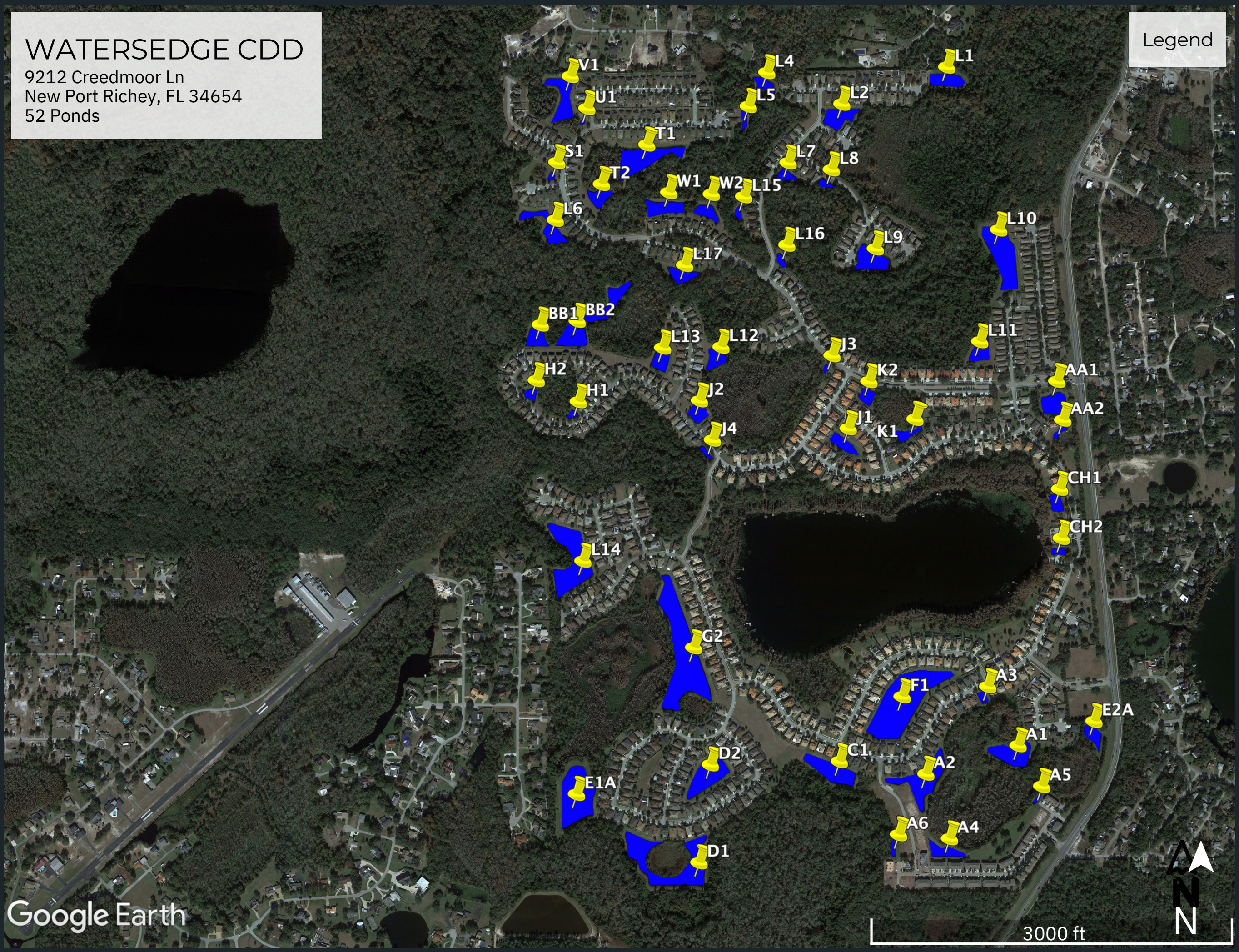
APRIL, 2024



# WATERSEEDGE CDD

9212 Creedmoor Ln  
New Port Richey, FL 34654  
52 Ponds

Legend



Google Earth

3000 ft



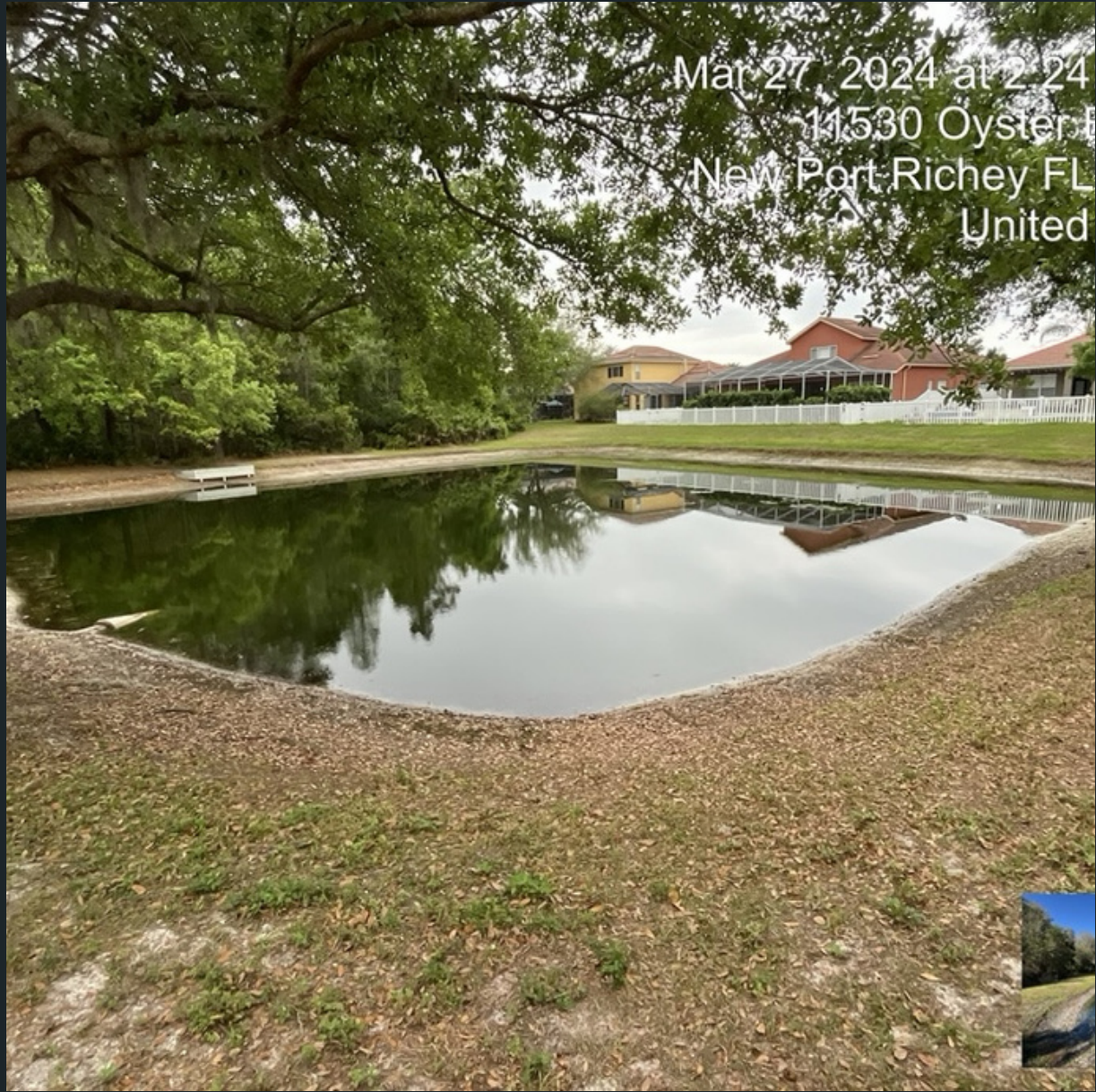
Prepared for: Matt Huber  
Prepared By: Devon Craig

## SUMMARY:

Spring time is here. Air temperatures are warming up and as a result water temperatures are following especially on the smaller bodies of water. Prevent maintenance is being applied to slow down blooms as a result of the warmer water. Our maintenance teams goal is to stay ahead of these unsightly blooms as best as possible. Ponds are are a maintenance level and ready for summer.



Pond #V1 Treated for Shoreline Vegetation.



Pond #K2 Treated for Algae and Shoreline Vegetation.



Pond #CH2 Treated for Algae and Shoreline Vegetation.





Pond #T2 Treated for Shoreline Vegetation.



Pond #L16 Treated for Algae and Shoreline Vegetation.



Pond #L6 Treated for Shoreline Vegetation.



Pond #J2 Treated for Algae and Shoreline Vegetation.



Pond #L8 Treated for Shoreline Vegetation.



Pond #L4 Treated for Algae and Shoreline Vegetation.



Pond #D2 Treated for Shoreline Vegetation.



Pond #D1 Treated for Algae and Shoreline Vegetation.



Pond #L13 Treated for Shoreline Vegetation.



Mar 27, 2024 at 1:35  
8908 New Alexandri  
New Port Richey FL  
United

Pond #F1 Treated for Algae and Shoreline Vegetation.



Mar 27, 2024 at 1:43  
11624 Bidde  
New Port Richey FL  
United

Pond #E1A Treated for Algae and Shoreline Vegetation.



Mar 27, 2024 at 1:38  
8400 Creedm  
New Port Richey FL  
United

Pond #C1 Treated for Algae and Shoreline Vegetation.

AA1: Was treated for Algae and shoreline vegetation.

AA2: Was treated for shoreline vegetation.

CH1: Was treated for shoreline vegetation.

CH2: Was treated for Algae shoreline vegetation.

A1: Was treated for shoreline vegetation.

A2: Was treated for shoreline vegetation.

A3: Was treated for shoreline vegetation.

A4: Was treated for shoreline vegetation.

A5: Was treated for shoreline vegetation.

A6: Was treated for shoreline vegetation.

E2A: Was treated for shoreline vegetation.

F1: Was treated for Algae and shoreline vegetation.

C1: Was treated for Algae and shoreline vegetation.

D1: Was treated for Algae and shoreline vegetation.

D2: Was treated for shoreline vegetation.

E1A: Was treated for Algae and shoreline vegetation.

G2: Was treated for Algae and shoreline vegetation.

L1: Was treated for shoreline vegetation.

L2: Was treated for shoreline vegetation.

L4: Was treated for Algae and shoreline vegetation.

L5: Was treated for shoreline vegetation.

L6: Was treated for shoreline vegetation.

L7: Was treated for shoreline vegetation.

L8: Was treated for shoreline vegetation.

L9: Was treated for shoreline vegetation.

L10: Was treated for Algae and shoreline vegetation.

L11: Was treated for shoreline vegetation.  
L12: Was treated for shoreline vegetation.  
L13: Was treated for shoreline vegetation.  
L14: Was treated for shoreline vegetation.  
L16: Was treated for Algae and shoreline vegetation.  
L17: Was treated for Algae and shoreline vegetation.  
J1: Was treated for shoreline vegetation.  
J2: Was treated for Algae and shoreline vegetation.  
J3: Was treated for shoreline vegetation.  
J4: Was treated for shoreline vegetation.  
K1: Was treated for shoreline vegetation.  
K2: Was treated for Algae and shoreline vegetation.  
H1: Was treated for shoreline vegetation.

H2: Was treated for Algae and shoreline vegetation.

BB1: Was treated for shoreline vegetation.

BB2: Was treated for shoreline vegetation.

S1: Was treated for shoreline vegetation.

T1: Was treated for Algae and shoreline vegetation.

T2: Was treated for shoreline vegetation.

U1: Was treated for shoreline vegetation.

V1: Was treated for shoreline vegetation.

W1: Was treated for Algae and shoreline vegetation.

W2: Was treated for shoreline vegetation.



## **Tab 2**

**Waters Edge Community Development District Engineer's Report:****Outfall Clearing and Erosion Restoration – Bellehaven Drive at Shelter Cove Loop**

- Finn Outdoor was awarded this project. Construction set to begin on April 16<sup>th</sup>.

**Pond L5 Erosion Review**

- Finn Outdoor was awarded this project. Construction set to begin on April 16<sup>th</sup>.

**Waters Edge 1 O&M Permit 26810.000 – Phases 1, 5 and 6**

- SWFWMD Permit is due for renewal before 9/30/2024.
- Finn Outdoor was awarded this project. Construction set to begin on April 16<sup>th</sup>.

**Waters Edge Perimeter Wall Painting and Repairs**

- ASI performed landscape removal on April 10th.
- Specialized Services Group began perimeter wall cleaning on April 9<sup>th</sup>, with wall and column repairs to begin the week of 4/15.
- Engineering staff to be on site 4/17 to review progress.

**11121 Shelter Cove Loop Erosion Review**

- Stantec was contacted by Resident at 11121 Shelter Cove Loop and requested a review of his property and surrounding CDD property for reported erosion, with potential sink hole activity.
- District staff as well as board member, Tim Haslett met with the resident on April 4<sup>th</sup> to review the property and surrounding area for potential causes of erosion.
- Report of findings attached.

# Memorandum

**Date:** April 16, 2024

**Project No:** 238200185

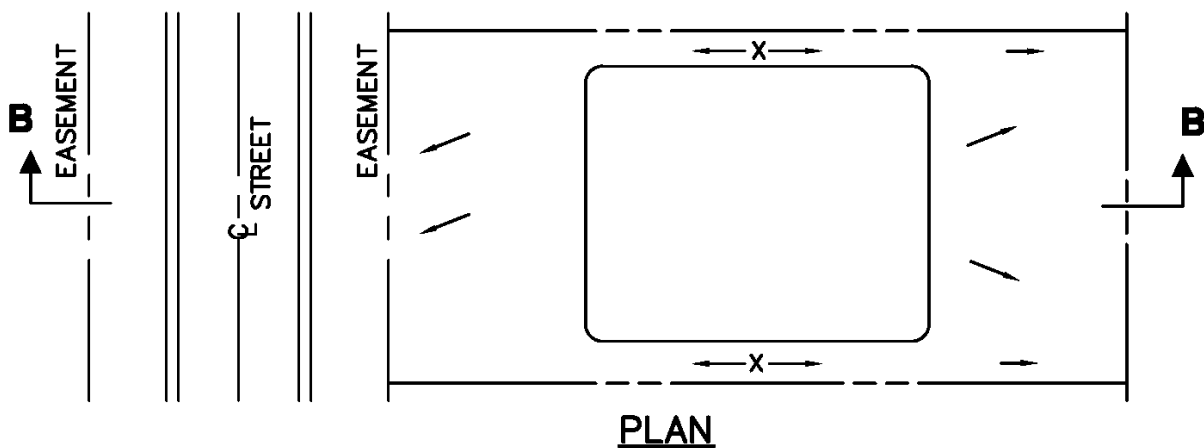
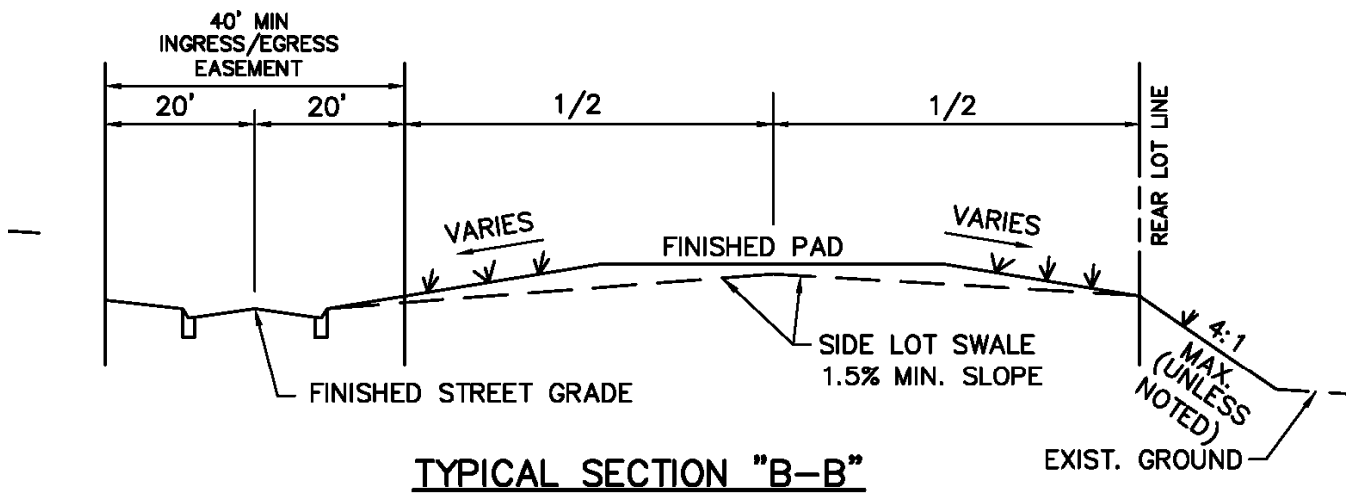
**To:** Waters Edge CDD

**From:** Frank Nolte

**RE:** Waters Edge CDD: 11121 Shelter Cove Loop Erosion

On April 4, 2024, Stantec staff conducted a field review of resident reported erosion located on and around his home at 11121 Shelter Cove Loop.

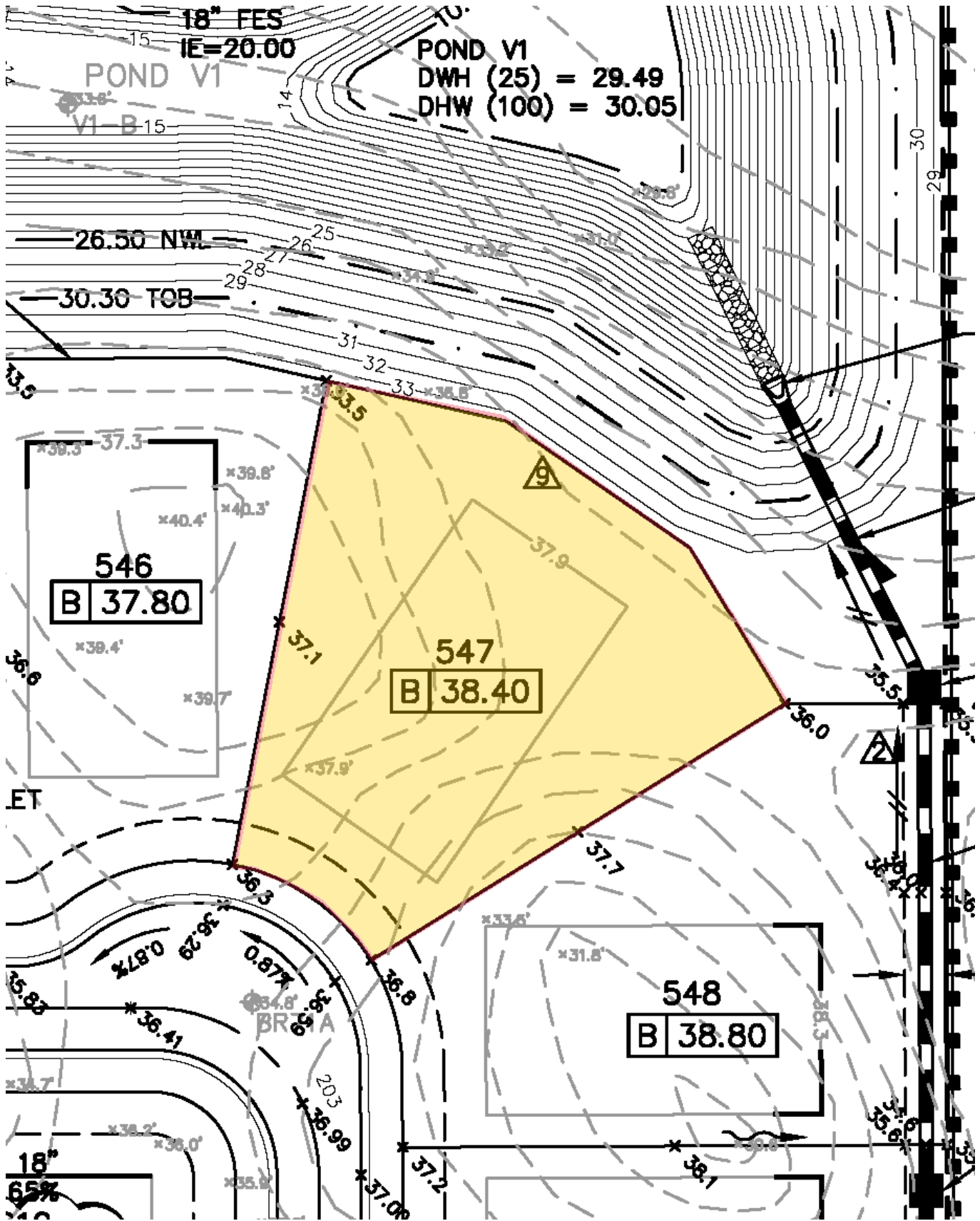
This lot is classified as having Type "B" grading, with the high spot of the property located in the middle of the lot. The front half of the property drains towards the roadway of Shelter Cove Loop, while the back half drains towards Pond V1 behind the property.



## TYPE "B" LOT GRADING

N.T.S.

11121 Shelter Cove Loop



Resident installed an approximate 1,400 square foot wooden deck back in 2012 which spans from the rear of the home to the back property line.



Resident has installed gutters along the rear of the home, with downspouts discharging at the corners of the deck, near the deck footings. Beneath the deck, there are exposed sandy soils, susceptible to erosion from upstream channelized flows.



**Channelized erosion present beneath deck.**





**Channelized erosion present beneath deck  
and along side of property.**



Sediment deposits were observed downstream along the CDD owned pond bank. It is believed that upstream erosion has led to turf decline on CDD property. Engineering staff requested the resident contain all soil and sediment within their property to prevent downstream sedimentation and erosion onto CDD property. Staff recommended erosion control measures such as the installation of swales at each gutter downspout to divert drainage away from the deck footings, installation of rock/rip rap underneath the decking, and potentially installing a retaining wall at the edge of the deck, just inside the property boundary. Once the resident takes necessary measures to contain sediment within their property, engineering staff will assess the CDD owned pond bank for needed repairs.



Frank Nolte, District Engineer – Waters Edge CDD



## **Tab 3**

# PSA \_\_\_\_\_ HORTICULTURAL

Landscape Consulting & Contract Management  
*"Protecting Your Landscape Investment"*

8431 Prestwick Place  
Trinity, FL 34655

## LANDSCAPE INSPECTION RESULTS

Date:	April 4, 2024
Client:	Water's Edge HOA/CDD
HOA/CDD:	Mickey McCarthy/Jason Peterson
Manager:	Rocco Iervasi
Ameriscape:	Al Suarez
PSA:	Tom Picciano

This landscape inspection report and subsequent ones will serve as both a benchmark of current landscape maintenance concerns and the progress toward corrective actions. It will also serve as a deficiency list of items that should be addressed under the current landscape maintenance agreement.

These items must be completed by April 22, 2024. Notify PSA in writing upon their completion, via fax or email, on or before 9:00 am on April 23, 2024. Contractor must initial the bottom of each page and sign at the bottom of the last page. The reason for any uncompleted deficiency must be listed.

**SCORE 1=POOR 2= FAIR 3=GOOD**

### **3 MOWING/EDGING/TRIMMING**

The turf is being mowed, edged, and trimmed in accordance with the specifications. It is actively growing and is now being mowed on a weekly basis. Blades were sharp, the edged material is being cleaned out, and the hard surfaces were blown clean.

Bridgeton park-line trim or mow tall grass along woodline.

### **3 TURF COLOR**

Belle Haven entry and exit-turf color was a lightly mottled medium green.

Slidell entry and exit-turf color was a lightly mottled medium green.

Veteran's Park-turf color was a lightly mottled medium green.

Clubhouse parking lot fence line-turf color ranged from a lightly mottled medium green to a consistent medium green.

Clubhouse front left side and berm area- turf color still ranged from a mottled medium green to a lightly mottled medium green.

Basketball court area-turf color remained a consistent medium green.

The color of the clubhouse Bahia lawn along northern section of Moon Lake Road fence was a mottled medium green.

Moon Lake Road- turf color was a mottled medium green.

*April*



*April*



*April*



*March*



*March*



*February*



*February*



*January*



*January*



**3 TURF DENSITY**

Moon Lake Road-the density was fair. Turf is made up of various grass types and weed growth.

Clubhouse front left side-density was strong.

The density of the clubhouse Bahia lawn along northern section of Moon Lake Road fence line was fair. There were several large bare sections.

Clubhouse lawn along the edge of the parking lot along Moon Lake Road-the density was strong.

Common area Bahia grass-the turf density ranged from fair to good.

Veteran's Park-most of the Bahia lawn density was good.

Slidell-the density was strong in most areas. Some sections were bare or sparse.

Belle Haven-the density was strong.

Clubhouse basketball court sidewalk area-the density was strong.

## **2 TURF WEED CONTROL**

11735 Belhaven- treat broadleaf weeds in common area lawn by large oaks.

Belle Haven exit gate- treat broadleaf weeds.

Slidell entry drive- treat broadleaf weeds.

Inside of Belle Haven entry gate - treat broadleaf weeds down to Creedmoor.

Slidell entry drive- treat broadleaf weeds.

## **2 TURF INSECT/DISEASE CONTROL/OVERALL HEALTH**

The turf is being mowed edged and trimmed in accordance with the specifications. The St. Augustine turf and Bahia turf are actively growing and are now being mowed on a weekly basis. The turf color ranged from a lightly mottled medium green to a consistent medium green. The density of the turf was strong throughout most of the community. Some warranty sod will be needed. The volume of broadleaf weeds has increased slightly. There was no significant insect or disease activity noted. Most of the heavy leaf drop has been removed from the turf. Patch disease has subsided.

Slidell entry and exit drive-replace dead sod. **WARRANTY WORK.** This should be done after the wall work is completed.

## **3 SHRUB/TREE INSECT/DISEASE CONTROL/OVERALL HEALTH**

Slidell exit drive-treat disease/ insect activity on juniper.

Front left of clubhouse - remove hollies against viburnum hedge. Submit proposal to add more juniper and hollies to the empty area. **MISSED FROM THE MARCH INSPECTION.**

Clubhouse right front corner-continue to monitor health of Washingtonia palm. The heart seems to be in decline. Palm is scheduled for removal. *Photo below.*

*December*



*January*



*February*



*March*



*April*



**3 BED WEED CONTROL**

Bridgeton park- remove bed weeds from palmetto.

Belle Haven entry drive at gate - remove bed weeds from jasmine.

Belle Haven entry drive at Moon Lake Road- remove bed weeds from juniper.

Bell Haven median and cap at Moon Lake Road- remove bed weeds from flower bed.

Bell Haven exit gate median - remove bad weeds from Indian hawthorn.

### **3 IRRIGATION MANAGEMENT**

Biddeford lift station- repair multiple breaks in the dripline around entire hedge line. **MISSED FROM THE MARCH INSPECTION.** *Photo below.*



The landscape appears to be receiving sufficient irrigation.

### **3 SHRUB PRUNING**

\*It should be noted that the shrubs, including but not limited to, the hawthorns and schilling hollies, should not be pruned too tightly. This means that too much vegetative growth is being removed, limiting the plants availability to make food for itself. In addition, the plant will look more attractive by not having “holes” in it and allowing it to develop its more natural shape. (i.e. Indian Hawthorn has a natural mounded habit)

Bridgeton park-cut back woodland. *Photo below.*



11631 Bathgate- cut back wood line per site visit during inspection. Contractual obligation only.

Inside of Belhaven exit gate - prune wax myrtle.

General work order-shrubs are now actively growing, and they need to be pruned to look neat and maintain a proper shape, with the bottom of shrubs being wider than the top section.

### **3 TREE PRUNING**

11735 Belle Haven - elevate oak tree over sidewalk in common area. *Photo below.*



Veterans Park - remove low oak tree branch by picnic table.

### **3 CLEANUP/RUBBISH REMOVAL**

There was not an excessive amount of vegetation or litter that needed to be removed.

### **3 APPEARANCE OF SEASONAL COLOR**

The new seasonal flower display of a “spring mix” provided a strong curb appeal in all major locations. The plants were healthy, and properly spaced. *Photo below.*

*April*

*April*



### **(1) CARRIED FORWARD FROM PRIOR MONTH**

**INSPECTION SCORE 33 of 36** –Passing score is 30 of 36 or 28 of 33 (with no seasonal color.)

**PASSED INSPECTION** Payment for April services should be released after the receipt of the **DONE REPORT.**



**FOR MANAGER**

None

**PROPOSALS**

**NEW** Front left of clubhouse - remove hollies against viburnum hedge. Submit proposal to add more juniper and holly in the empty area.

**SUMMARY**

ASI performed to contractual standards for this inspection. The turf is being mowed, edged, and trimmed in accordance with the specifications. The turf color was good and ranged from a lightly mottled medium green to a consistent medium green. The density of the turf was strong throughout most of the community. The broadleaf and grassy weed volume has increased but was manageable by spot treatments. There was no significant insect or disease activity in the turf. The shrubs were actively growing and will now need to be pruned regularly. There were no major insect or disease issues related to the shrubs. Some tree pruning was needed for pedestrian clearance. The bed and crack weeds were well managed. It appeared that the turf and shrubs were receiving sufficient irrigation. An irrigation repair needs to be done promptly. The newly installed flowers of “spring mix” provided a strong curb appeal in all locations. Two items were missed from the March inspection.

**ASI certifies that all work on this list has been completed in the 14-day timeframe specified in the contractual agreement and provided to PSA within the same period.**

**Signature** \_\_\_\_\_

**Print Name** \_\_\_\_\_

**Company** \_\_\_\_\_

**Date** \_\_\_\_\_

## **Tab 4**



Rizzetta & Company

# **Waters Edge Community Development District**

---

**Financial Statements  
(Unaudited)**

**March 31, 2024**

**Prepared by: Rizzetta & Company, Inc.**

**[watersedgecdd.org](http://watersedgecdd.org)  
[rizzetta.com](http://rizzetta.com)**

**Waters Edge Community Development District**

Balance Sheet

As of 03/31/2024

(In Whole Numbers)

	General Fund	Reclaimed Water Fund	Reserve Fund	Debt Service Fund	Total Gvmnt Fund	Fixed Assets Group	Long-Term Debt
<b>Assets</b>							
Cash In Bank	292,706	57,359	(43,980)	0	306,084	0	0
Investments	27,103	34,949	479,081	1,178,632	1,719,767	0	0
Accounts Receivable	19,856	0	0	25,681	45,536	0	0
Refundable Deposits	3,965	0	0	0	3,965	0	0
Due From Other	36,674	0	1,575	0	38,249	0	0
Fixed Assets	0	0	0	0	0	6,633,196	0
Amount Available in Debt Service	0	0	0	0	0	0	1,204,313
Amount To Be Provided Debt Service	0	0	0	0	0	0	6,375,687
<b>Total Assets</b>	<b>380,304</b>	<b>92,308</b>	<b>436,676</b>	<b>1,204,313</b>	<b>2,113,602</b>	<b>6,633,196</b>	<b>7,580,000</b>
<b>Liabilities</b>							
Accounts Payable	10,767	0	0	0	10,767	0	0
Accrued Expenses	10,050	6,000	0	0	16,050	0	0
Due To Other	1,575	36,674	0	0	38,249	0	0
Revenue Bonds Payable-Long Term	0	0	0	0	0	0	7,580,000
<b>Total Liabilities</b>	<b>22,392</b>	<b>42,674</b>	<b>0</b>	<b>0</b>	<b>65,066</b>	<b>0</b>	<b>7,580,000</b>
<b>Fund Equity &amp; Other Credits</b>							
Beginning Fund Balance	234,471	22,670	347,788	578,762	1,183,691	0	0
Investment In General Fixed Assets	0	0	0	0	0	6,633,196	0
Net Change in Fund Balance	123,442	26,964	88,888	625,551	864,844	0	0
<b>Total Fund Equity &amp; Other Credits</b>	<b>357,913</b>	<b>49,634</b>	<b>436,676</b>	<b>1,204,313</b>	<b>2,048,535</b>	<b>6,633,196</b>	<b>0</b>
<b>Total Liabilities &amp; Fund Equity</b>	<b>380,304</b>	<b>92,308</b>	<b>436,676</b>	<b>1,204,313</b>	<b>2,113,602</b>	<b>6,633,196</b>	<b>7,580,000</b>

See Notes to Unaudited Financial Statements

**Waters Edge Community Development District**

## Statement of Revenues and Expenditures

As of 03/31/2024

(In Whole Numbers)

	Year Ending 09/30/2024	Through 03/31/2024	Year To Date 03/31/2024	
	Annual Budget	YTD Budget	YTD Actual	YTD Variance
<b>Revenues</b>				
Interest Earnings				
Interest Earnings	0	0	171	(171)
Special Assessments				
Tax Roll	410,827	410,827	412,660	(1,833)
<b>Total Revenues</b>	<b>410,827</b>	<b>410,827</b>	<b>412,831</b>	<b>(2,004)</b>
<b>Expenditures</b>				
Legislative				
Supervisor Fees	13,000	6,500	5,800	700
<b>Total Legislative</b>	<b>13,000</b>	<b>6,500</b>	<b>5,800</b>	<b>700</b>
Financial & Administrative				
Accounting Services	13,764	6,882	7,054	(172)
Administrative Services	5,161	2,580	2,580	0
Arbitrage Rebate Calculation	450	0	0	0
Assessment Roll	5,728	5,728	5,728	0
Auditing Services	3,250	0	0	0
Disclosure Report	1,500	1,500	0	1,500
District Engineer	18,000	9,000	10,735	(1,735)
District Management	24,929	12,465	12,465	0
Dues, Licenses & Fees	175	175	175	0
Financial & Revenue Collections	5,728	2,864	2,864	0
Legal Advertising	500	250	165	85
Miscellaneous Mailings	3,000	1,500	250	1,250
Public Officials Liability Insurance	3,391	3,391	3,144	247
Tax Collector/Property Appraiser Fees	150	0	0	0
Trustees Fees	3,775	3,775	1,886	1,889
Website Hosting, Maintenance, Backup & E	4,000	2,000	4,229	(2,229)
<b>Total Financial &amp; Administrative</b>	<b>93,501</b>	<b>52,110</b>	<b>51,275</b>	<b>836</b>
Legal Counsel				
District Counsel	13,000	6,500	14,068	(7,569)
<b>Total Legal Counsel</b>	<b>13,000</b>	<b>6,500</b>	<b>14,068</b>	<b>(7,569)</b>
Electric Utility Services				
Utility Services	27,250	13,625	10,321	3,304
<b>Total Electric Utility Services</b>	<b>27,250</b>	<b>13,625</b>	<b>10,321</b>	<b>3,304</b>
Stormwater Control				
Aquatic Maintenance	26,220	13,110	13,110	0
Aquatic Plant Replacement	2,500	1,250	485	765

See Notes to Unaudited Financial Statements

**Waters Edge Community Development District**

## Statement of Revenues and Expenditures

As of 03/31/2024

(In Whole Numbers)

	Year Ending	Through	Year To Date	
	09/30/2024	03/31/2024	03/31/2024	
	Annual Budget	YTD Budget	YTD Actual	YTD Variance
Fountain Service Repair & Maintenance	3,500	1,750	0	1,750
Lake/Pond Bank Maintenance & Repair	8,000	4,000	0	4,000
Mitigation Area Monitoring & Maintenance	500	250	0	250
Stormwater System Maintenance	7,500	3,750	0	3,750
<b>Total Stormwater Control</b>	<b>48,220</b>	<b>24,110</b>	<b>13,595</b>	<b>10,515</b>
<b>Other Physical Environment</b>				
Entry & Walls Maintenance & Repair	3,000	1,500	0	1,500
General Liability Insurance	3,391	3,391	3,144	247
Irrigation Maintenance & Repair	12,000	6,000	5,352	648
Irrigation Repair	12,500	6,250	313	5,937
Landscape - Mulch	12,000	6,000	0	6,000
Landscape Maintenance	102,500	51,250	46,214	5,036
Landscape Miscellaneous	5,000	2,500	7,000	(4,500)
Landscape Replacement Plants, Shrubs, Tr	10,000	5,000	0	5,000
Property Insurance	10,465	10,465	10,442	23
Reclaimed Pump Maintenance & Repairs	25,000	12,500	0	12,500
Well Maintenance	5,000	2,500	0	2,500
<b>Total Other Physical Environment</b>	<b>200,856</b>	<b>107,356</b>	<b>72,465</b>	<b>34,891</b>
<b>Contingency</b>				
Miscellaneous Contingency	15,000	7,500	1,865	5,635
<b>Total Contingency</b>	<b>15,000</b>	<b>7,500</b>	<b>1,865</b>	<b>5,635</b>
<b>Total Expenditures</b>	<b>410,827</b>	<b>217,701</b>	<b>169,389</b>	<b>48,312</b>
<b>Total Excess of Revenues Over(Under) Expenditures</b>	<b>0</b>	<b>193,126</b>	<b>243,442</b>	<b>(50,316)</b>
<b>Total Other Financing Sources(Uses)</b>				
Interfund Transfer (Expense)				
Interfund Transfer	0	0	(120,000)	120,000
<b>Total Other Financing Sources(Uses)</b>	<b>0</b>	<b>0</b>	<b>(120,000)</b>	<b>120,000</b>
<b>Fund Balance, Beginning of Period</b>	<b>0</b>	<b>0</b>	<b>234,471</b>	<b>(234,471)</b>
<b>Total Fund Balance, End of Period</b>	<b>0</b>	<b>193,126</b>	<b>357,913</b>	<b>(164,787)</b>

See Notes to Unaudited Financial Statements

**Waters Edge Community Development District**

## Statement of Revenues and Expenditures

As of 03/31/2024

(In Whole Numbers)

	Year Ending 09/30/2024	Through 03/31/2024	Year To Date 03/31/2024	
	Annual Budget	YTD Budget	YTD Actual	YTD Variance
<b>Revenues</b>				
Interest Earnings				
Interest Earnings	0	0	2	(2)
Special Assessments				
Tax Roll	57,360	57,360	57,359	1
<b>Total Revenues</b>	<u>57,360</u>	<u>57,360</u>	<u>57,361</u>	<u>(1)</u>
<b>Expenditures</b>				
Water-Sewer Combination Services				
Utility - Reclaimed	57,360	28,680	30,397	(1,717)
<b>Total Water-Sewer Combination Services</b>	<u>57,360</u>	<u>28,680</u>	<u>30,397</u>	<u>(1,717)</u>
<b>Total Expenditures</b>	<u>57,360</u>	<u>28,680</u>	<u>30,397</u>	<u>(1,717)</u>
<b>Total Excess of Revenues Over(Under) Expenditures</b>	<u>0</u>	<u>28,680</u>	<u>26,964</u>	<u>1,716</u>
<b>Fund Balance, Beginning of Period</b>	<u>0</u>	<u>0</u>	<u>22,670</u>	<u>(22,670)</u>
<b>Total Fund Balance, End of Period</b>	<u>0</u>	<u>28,680</u>	<u>49,634</u>	<u>(20,954)</u>

**Waters Edge Community Development District**

## Statement of Revenues and Expenditures

As of 03/31/2024

(In Whole Numbers)

	Year Ending 09/30/2024	Through 03/31/2024	Year To Date 03/31/2024	
	Annual Budget	YTD Budget	YTD Actual	YTD Variance
<b>Revenues</b>				
Interest Earnings				
Interest Earnings	0	0	4,578	(4,578)
Special Assessments				
Tax Roll	60,277	60,277	60,277	0
<b>Total Revenues</b>	<u>60,277</u>	<u>60,277</u>	<u>64,855</u>	<u>(4,578)</u>
<b>Expenditures</b>				
Contingency				
Capital Reserve	60,277	60,277	95,967	(35,690)
Total Contingency	60,277	60,277	95,967	(35,690)
<b>Total Expenditures</b>	<u>60,277</u>	<u>60,277</u>	<u>95,967</u>	<u>(35,690)</u>
<b>Total Excess of Revenues Over(Under) Expenditures</b>	<u>0</u>	<u>0</u>	<u>(31,112)</u>	<u>31,112</u>
<b>Total Other Financing Sources(Uses)</b>				
Interfund Transfer (Revenue)				
Interfund Transfer	0	0	120,000	(120,000)
<b>Total Other Financing Sources(Uses)</b>	<u>0</u>	<u>0</u>	<u>120,000</u>	<u>(120,000)</u>
<b>Fund Balance, Beginning of Period</b>	<u>0</u>	<u>0</u>	<u>347,788</u>	<u>(347,788)</u>
<b>Total Fund Balance, End of Period</b>	<u>0</u>	<u>0</u>	<u>436,676</u>	<u>(436,676)</u>



**Waters Edge Community Development District**

## Statement of Revenues and Expenditures

As of 03/31/2024

(In Whole Numbers)

	Year Ending 09/30/2024	Through 03/31/2024	Year To Date 03/31/2024	
	Annual Budget	YTD Budget	YTD Actual	YTD Variance
<b>Revenues</b>				
Interest Earnings				
Interest Earnings	0	0	16,865	(16,865)
Special Assessments				
Tax Roll	757,933	757,933	760,555	(2,622)
<b>Total Revenues</b>	<u>757,933</u>	<u>757,933</u>	<u>777,420</u>	<u>(19,487)</u>
<b>Expenditures</b>				
Debt Service				
Interest	302,933	302,933	151,869	151,064
Principal	455,000	455,000	0	455,000
<b>Total Debt Service</b>	<u>757,933</u>	<u>757,933</u>	<u>151,869</u>	<u>606,064</u>
<b>Total Expenditures</b>	<u>757,933</u>	<u>757,933</u>	<u>151,869</u>	<u>606,064</u>
<b>Total Excess of Revenues Over(Under) Expenditures</b>	<u>0</u>	<u>0</u>	<u>625,551</u>	<u>(625,551)</u>
<b>Fund Balance, Beginning of Period</b>	<u>0</u>	<u>0</u>	<u>578,762</u>	<u>(578,762)</u>
<b>Total Fund Balance, End of Period</b>	<u>0</u>	<u>0</u>	<u>1,204,313</u>	<u>(1,204,313)</u>

**Waters Edge CDD  
Investment Summary  
March 31, 2024**

<u>Account</u>	<u>Investment</u>	<u>Balance as of March 31, 2024</u>
The Bank of Tampa	Money Market	\$ 27,103
	<b>Total General Fund Investments</b>	<b>\$ 27,103</b>
The Bank of Tampa ICS Capital Reserve		
Israel Discount Bank of New York	Money Market	\$ 247,472
Western Alliance Bank	Money Market	231,609
	<b>Total Reserve Fund Investments</b>	<b>\$ 479,081</b>
US Bank Series 2015 Revenue	US Bank Money Market 5	\$ 795,317
US Bank Series 2015 Reserve A-1	US Bank Money Market 5	360,027
US Bank Series 2015 Reserve A-2	US Bank Money Market 5	18,107
US Bank Series 2015 Excess Revenue	US Bank Money Market 5	5,181
	<b>Total Debt Service Fund Investments</b>	<b>\$ 1,178,632</b>

**Waters Edge Community Development District  
Summary A/R Ledger  
From 03/01/2024 to 03/31/2024**

<b>Fund_ID</b>	<b>Fund Name</b>	<b>Customer</b>	<b>Invoice Number</b>	<b>AR Account</b>	<b>Date</b>	<b>Balance Due</b>
<b>345, 2419</b>						
345-001	345 General Fund	Lugos Property Services LLC	AR00001488	11501	09/30/2023	1,575.00
345-001	345 General Fund	Pasco County Tax Collector	AR00001201	12110	10/01/2023	17,905.75
345-001	345 General Fund	Waters Edge Master HOA	AR00001716	11510	03/31/2024	375.19
<b>Sum for 345, 2419</b>						<b>19,855.94</b>
<b>345, 2422</b>						
345-200	345 Debt Service Fund S2015	Pasco County Tax Collector	AR00001201	12110	10/01/2023	25,680.62
<b>Sum for 345, 2422</b>						<b>25,680.62</b>
<b>Sum for 345</b>						<b>45,536.56</b>
<b>Sum Total</b>						<b>45,536.56</b>

See Notes to Unaudited Financial Statements

**Waters Edge Community Development District  
Summary A/P Ledger  
From 03/01/2024 to 03/31/2024**

<b>Fund Name</b>	<b>GL posting date</b>	<b>Vendor name</b>	<b>Document number</b>	<b>Description</b>	<b>Balance Due</b>
<b>345, 2419</b>					
345 General Fund	03/28/2024	Gabriel D Papadopou- los	GP032824	Board of Supervisors Meeting 03/28/24	200.00
345 General Fund	03/29/2024	GHS Environmental LLC	2024-217	Monthly Meter Read- ings 03/24	142.00
345 General Fund	03/28/2024	Jason Peterson	JP032824	Board of Supervisors Meeting 03/28/24	200.00
345 General Fund	03/13/2024	Pasco County Utilities	20056578	Autopay 9019 Creedmoor Re- claim Lane 02/24	5,210.94
345 General Fund	03/25/2024	Stantec Consulting Services, Inc.	2211386	Engineering Services 03/24	1,669.38
345 General Fund	03/01/2024	Straley Robin Vericker	24200	General Legal Ser- vices 02/24	1,126.61
345 General Fund	03/28/2024	Teri Lynn Geney	TG032824	Board of Supervisors Meeting 03/28/24	200.00
345 General Fund	03/28/2024	Timothy M. Haslett	TH032824	Board of Supervisors Meeting 03/28/24	200.00
345 General Fund	03/26/2024	Withlacoochee River Electric Cooperative, Inc.	2189384	03/24 Auto- pay Electric 2189384 03/24	1,629.06
345 General Fund	03/26/2024	Withlacoochee River Electric Cooperative, Inc.	2189381	03/24 Auto- pay Electric 2189381 03/24	40.63
345 General Fund	03/26/2024	Withlacoochee River Electric Cooperative, Inc.	2189382	03/24 Auto- pay Electric 2189382 03/24	40.53
345 General Fund	03/26/2024	Withlacoochee River Electric Cooperative, Inc.	2189378	03/24 Auto- pay Electric 2189378 03/24	67.54
345 General Fund	03/26/2024	Withlacoochee River Electric Cooperative, Inc.	2189383	03/24 Auto- pay Electric 2189383 03/24	40.16
<b>Sum for 345, 2419</b>					<b>10,766.85</b>
<b>Sum for 345</b>					<b>10,766.85</b>
<b>Sum Total</b>					<b>10,766.85</b>

**Waters Edge Community Development District**  
**Notes to Unaudited Financial Statements**  
**March 31, 2024**

**Balance Sheet**

1. Trust statement activity has been recorded through 03/31/2024.
2. See EMMA (Electronic Municipal Market Access) at <https://emma.msrb.org> for Municipal Disclosures and Market Data.
3. For presentation purposes, the Reserves are shown in a separate fund titled Reserve Fund.

**Summary A/R Ledger-Payment Terms**

4. Payment terms for landowner assessments are (a) defined in the FY23-24 Assessment Resolution adopted by the Board of Supervisors, (b) pursuant to Florida Statutes, Chapter 197 for assessments levied via the county tax roll.

## **Tab 5**

**Sprinkler Solutions of Fla. #SCC131152616**

401 N Parsons Ave Ste 106A  
Brandon, FL 33510  
+1 8135031228  
jeff@ssofla.com



# Estimate

**ADDRESS**

Waters Edge  
Mathew Huber  
9019 Creedmoor Ln.  
New Port Ritchey, Fl 34654

**ESTIMATE #** 1201

**DATE** 04/01/2024

**JOB SITE**

Belle Haven & Biddeford

ACTIVITY	QTY	RATE	AMOUNT
Scope of Work:	1	750.00	750.00
<ol style="list-style-type: none"> <li>General pump station cleaning – Exterior/Interior = Vacuum</li> <li>Inspect hydraulic connections and check for proper torque</li> <li>Inspect fans, pressure transducer/gauges and clean air filters</li> <li>Inspect / torque electrical connections on pump controls.</li> <li>Test-run pump system to ensure proper operations from min. to max. flows</li> <li>Confirm Variable Frequency Drive (VFD) parameters and tune as required</li> <li>Inspect pump discharge system</li> </ol>			
Notes:			
<ol style="list-style-type: none"> <li>Scope of work is limited to inspection of the pump system and warranty repairs</li> <li>Additional repairs identified during each inspection must be authorized by customer</li> <li>Sprinkler Solutions of Florida will document each inspection with a completed check list</li> <li>Sprinkler Solutions of Florida is not responsible for electrical surge or existing damage caused by neglect</li> <li>Preventive Maintenance intervals shall be adjusted based on changes in site conditions</li> <li>Sprinkler Solutions of Florida is not responsible for water source quality (i.e. debris, pH, staining and etc.)</li> <li>Sprinkler Solutions of Florida will respond within 36 hrs.(week days) to service requests outside of this agreement.</li> </ol>			
Service Agreement Price (per visit): \$750.00 (Services provided outside above Scope of Work will be billed at a \$145. / hour rate plus \$85. Per hour travel. Parts are not included.)			
Commencement/Cancellation:			
An initial inspection shall occur on and subsequent inspections will continue every 3 months thereafter. Termination of this agreement by either party must be in writing and a minimum of 30 days prior to the next inspection.			

TOTAL

**\$750.00**

Accepted By

Accepted Date





Network: Mar 15, 2024 at 4:51:22 PM EDT  
Local: Mar 15, 2024 at 4:51:22 PM EDT  
N 28° 17' 37.067", W 82° 37' 32.901"  
223° SW  
11420 Belle Haven Dr  
New Port Richey FL 34654  
United States





Network: Mar 19, 2024 at 10:30:36 AM EDT  
Local: Mar 19, 2024 at 10:30:36 AM EDT  
N 28° 17' 4.535", W 82° 37' 37.836"  
233° SW  
11426 Biddeford Pl  
New Port Richey FL 34654  
United States



## **Tab 6**

**RESOLUTION 2024-01**

**A RESOLUTION OF THE BOARD OF SUPERVISORS OF WATERS  
EDGE COMMUNITY DEVELOPMENT DISTRICT APPOINTING  
OFFICERS OF THE DISTRICT, AND PROVIDING FOR AN EFFECTIVE  
DATE**

WHEREAS, Waters Edge Community Development District (hereinafter the "District") is a local unit of special-purpose government created and existing pursuant to Chapter 190, Florida Statutes, being situated entirely within Pasco County, Florida; and

WHEREAS, the Board of Supervisors of the District desires to appoint Officers of the District.

**NOW, THEREFORE, BE IT RESOLVED BY THE BOARD OF SUPERVISORS  
OF WATERS EDGE COMMUNITY DEVELOPMENT DISTRICT:**

Section 1. \_\_\_\_\_ is appointed Chairman.

Section 2. \_\_\_\_\_ is appointed Vice Chairman.

Section 3. \_\_\_\_\_ is appointed Assistant Secretary.

\_\_\_\_\_ is appointed Assistant Secretary.

\_\_\_\_\_ is appointed Assistant Secretary.

\_\_\_\_\_ is appointed Assistant Secretary.

Section 4. This Resolution supersedes any prior appointments made by the Board for Chairman and Vice-Chairman.

Section 5. This Resolution shall become effective immediately upon its adoption.

**PASSED AND ADOPTED THIS \_\_\_\_\_ DAY OF \_\_\_\_\_, 2024.**

**WATERS EDGE COMMUNITY  
DEVELOPMENT DISTRICT**

\_\_\_\_\_  
**CHAIRMAN / VICE CHAIRMAN**

**ATTEST:**

\_\_\_\_\_  
**SECRETARY / ASSISTANT SECRETARY**

## **Tab 7**

**MINUTES OF MEETING**

*Each person who decides to appeal any decision made by the Board with respect to any matter considered at the meeting is advised that the person may need to ensure that a verbatim record of the proceedings is made, including the testimony and evidence upon which such appeal is to be based.*

**WATERS EDGE  
COMMUNITY DEVELOPMENT DISTRICT**

The regular meeting of the Board of Supervisors of Waters Edge Community Development District was held on **Thursday, March 28, 2024, at 5:00 p.m.** at the Waters Edge Clubhouse, located at 9019 Creedmoor Lane, New Port Richey, FL 34654.

Present and constituting a quorum:

Teri Geney	<b>Board Supervisor, Chairman</b>
Timothy Haslett	<b>Board Supervisor, Assistant Secretary</b>
Jason Peterson	<b>Board Supervisor, Assistant Secretary</b>
Gabriel Papadopoulos	<b>Board Supervisor, Assistant Secretary</b>

Also present were:

Matthew Huber	<b>Regional District Manager, Rizzetta &amp; Co., Inc.</b>
Michael Broadus	<b>District Counsel, Straley, Robin &amp; Vericker (via phone)</b>
Frank Nolte	<b>District Engineer, Stantec (via phone)</b>
Tony Smith	<b>Representative, Sitex Aquatics</b>

**FIRST ORDER OF BUSINESS**

**Call to Order**

Mr. Huber called the meeting to order and confirmed there was a quorum.

**SECOND ORDER OF BUSINESS**

**Audience Comments on Agenda Items**

There were no audience member present.

**THIRD ORDER OF BUSINESS**

**Staff Reports**

**A. Aquatics Manager**

**1. Presentation of Monthly Aquatics Report**

Mr. Smith presented his report to the Board. He stated all lakes/Ponds are on track. Mr. Haslett stated he saw 3 ponds that had algae buildup and that Mr. Smith had already taken care of them.

**B. District Engineer Report**

Ms. Geney asked Mr. Nolte if all the cleanup work would be done by Finn Outdoor. He responded yes.

Mr. Nolte spoke to the Board regarding the reports that have been tabled until Spring to get proposals. Finn responded with a proposal to cover all the needs. Mr. Nolte reviewed the individual items with the Board so they could decide which items needed to be taken care of now.

On a motion by Ms. Geney, seconded by Mr. Papadopoulos, with all in favor, the Board of Supervisors approved the Finn proposal #2137, Item #4, with a Not To Exceed of \$8,000, for the Water's Edge Community Development District.

On a motion by Ms. Geney, seconded by Mr. Haslett, with all in favor, the Board of Supervisors approved the Finn proposal #2137, Item #8, in the amount of \$2,900, for the Water's Edge Community Development District.

On a motion by Ms. Geney, seconded by Mr. Haslett, with all in favor, the Board of Supervisors approved the Finn proposal #2137, Item #5/6/7, in the amount of \$3,450, for the Water's Edge Community Development District.

Mr. Haslett discussed the "Lighthouse Project". The Board determined the CDD owns 28 houses, per the reserve study.

**C. District Counsel**

Mr. Broadus updated the Board that the Wall agreement has been drafted and sent for execution.

Ms. Geney clarified that the Board would like to complete the compliance training individually.

Mr. Haslett asked Mr. Broadus if his personal devices were at risk of a FOI request since he uses them for CDD business. Mr. Broadus explained to the Board what the best practices were.

**D. PSA Inspection Reports**

**1. March Report**

The Board reviewed the February Report. There were no questions or comments.

**2. ASI Irrigation Inspection Report**

The Board reviewed the ASI Irrigation Inspection Report. There were no questions or comments.

**E. District Manager**

Mr. Huber advised the Board that the next regularly scheduled meeting is April 25, 2024 at 3:30 pm

**FOURTH ORDER OF BUSINESS**

**Consideration of Mulch Proposals**

On a motion by Mr. Papadopoulos, seconded by Mr. Haslett, with all in favor, the Board of Supervisors approved, the proposal from iMulch to do all mulch areas except for the pine straw at the fountain pond, for the Water's Edge Community Development District.

**FIFTH ORDER OF BUSINESS**

**ASI Proposal for Wall Cutbacks**

On a motion by Ms. Geney, seconded by Mr. Papadopoulos, with all in favor, the Board of Supervisors approved the ASI Proposal for Wall Cutbacks, in the amount of \$2,355.00, for the Water's Edge Community Development District.

**SIXTH ORDER OF BUSINESS**

**Update on SWFWMD WUP Permit Reporting Notice**

On a motion by Ms. Geney, seconded by Mr. Peterson, with all in favor, the Board of Supervisors approved the GHS Well Reporting Proposal, in the amount of \$3,550.00 (annually), and directed District Counsel to prepare a form of agreement for the Water's Edge Community Development District.

**SEVENTH ORDER OF BUSINESS**

**Update on Well Repairs & Well Pump Maintenance Proposal**

It was reported that the 1<sup>st</sup> Tuesday of every month the pumps are to be tested by Kevin LaBrum and Mr. Haslett will join him to learn the process.

**EIGHTH ORDER OF BUSINESS**

**Update on Chlorine Injection Pump and Chlorine Tab Maintenance**

Mr. Haslett reported that the system is working and that he and Kevin are trying to get the system back to using 1 bucket of tabs per week.

**NINETH ORDER OF BUSINESS**

**Consideration of Minutes of the Board of Supervisors' Regular Meeting held on February 22, 2024**

On a motion by Ms. Geney, seconded by Mr. Papadopoulos, with all in favor, the Board of Supervisors approved the minutes of the Board of Supervisors' regular meeting held on February 22, 2024, for the Water's Edge Community Development District.



**TENTH ORDER OF BUSINESS**

**Ratification of Operation and  
Maintenance Expenditures  
For February 2024.**

On a motion by Mr. Haslett, seconded by Mr. Peterson, with all in favor, the Board of Supervisors ratified the Operation and Maintenance Expenditures For February 2024 (\$45,289.18), for the Water's Edge Community Development District.

**ELEVNTH ORDER OF BUSINESS**

**Audience Comments & Supervisor  
Requests**

Ms. Geney reminded the Board that a Resolution to redesignate the officers will be needed at the next Board meeting.

Ms. Geney stated her intent to resign from the Chair, as she is out of town often. She will be staying on the Board.

Mr. Haslett updated Mr. Huber about some accounting errors on some electric bills that were moved to FY 2023.

Mr. Haslett updated the Board about his attendance at the Town Hall Board meeting.

Mr. Haslett discussed the clearing and cutbacks being performed by ASI. He expressed his displeasure with their work.

**TWELFTH ORDER OF BUSINESS**

**Adjournment**

Mr. Huber stated if there was no further business to come before the Board, a motion to adjourn would be in order.

On a Motion by Mr. Papadopoulos, seconded by Ms. Geney, with all in favor, the Board of Supervisors adjourned the meeting at 7:19 p.m. for the Water's Edge Community Development District.

\_\_\_\_\_  
Secretary/Assistant Secretary

\_\_\_\_\_  
Chairman/Vice Chairman

## **Tab 8**

# Waters Edge Community Development District

---

District Office · Tampa, Florida · (813) 933-5771  
Mailing Address · 3434 Colwell Avenue, Suite 200, Tampa · Florida 33614  
[www.watersedgecdd.org](http://www.watersedgecdd.org)

## **Operations and Maintenance Expenditures March 2024 For Board Approval**

Attached please find the check register listing the Operation and Maintenance expenditures paid from March 1, 2024 through March 31, 2024. This does not include expenditures previously approved by the Board.

The total items being presented: **\$48,855.49**

Approval of Expenditures:

\_\_\_\_\_

\_\_\_\_\_ Chairperson

\_\_\_\_\_ Vice Chairperson

\_\_\_\_\_ Assistant Secretary

# Waters Edge Community Development District

## Paid Operation & Maintenance Expenditures

March 1, 2024 Through March 31, 2024

<u>Vendor Name</u>	<u>Check Number</u>	<u>Invoice Number</u>	<u>Invoice Description</u>	<u>Invoice Amount</u>
Enumerate	100310	INV12770	Engage SMA Subscription 03/24	\$ 206.90
Gabriel D Papadopoulos	100305	GP022224	Board of Supervisors Meeting 02/22/24	\$ 200.00
George Anastasopoulos	100306	GA022224	Board of Supervisors Meeting 02/22/24	\$ 200.00
GHS Environmental LLC	100311	2024-178	Monthly Meter Readings 02/24	\$ 142.00
Irrigation Technical Services, Inc.	100312	33039	Water Management - Pump Station 02/24	\$ 550.00
Jason Peterson	100307	JP022224	Board of Supervisors Meeting 02/22/24	\$ 200.00
Pasco County Utilities	20240304-1	19892850	9019 Creedmoor Reclaim Lane 01/24	\$ 5,555.22
Rizzetta & Company, Inc.	100303	INV0000087899	District Management Fees 03/24	\$ 4,331.83
Sitex Aquatics, LLC	100313	8068-B	Hardwood Plant Removal 02/24	\$ 485.00
Sitex Aquatics, LLC	100314	8089-B	Monthly Lake Maintenance 03/24	\$ 2,185.00
Specialized Property Services, Inc.	100315	07196-001	Wall Painting and Repairs 03/24 - 20% Deposit	\$ 25,017.20
Teri Lynn Geney	100308	TG022224	Board of Supervisors Meeting 02/22/24	\$ 200.00

# Waters Edge Community Development District

## Paid Operation & Maintenance Expenditures

March 1, 2024 Through March 31, 2024

<u>Vendor Name</u>	<u>Check Number</u>	<u>Invoice Number</u>	<u>Invoice Description</u>	<u>Invoice Amount</u>
Timothy M. Haslett	100309	TH022224	Board of Supervisors Meeting 02/22/24	\$ 200.00
Waters Edge Master HOA, Inc.	100304	030124	Shared Cost Landscape Services 02/24	\$ 7,564.00
Withlacoochee River Electric Cooperative, Inc.	20240308-1	2189382 02/24	Electric 2189382 02/24	\$ 40.26
Withlacoochee River Electric Cooperative, Inc.	20240308-2	2189384 02/24	Electric 2189384 02/24	\$ 1,627.54
Withlacoochee River Electric Cooperative, Inc.	20240308-3	2189378 02/24	Electric 2189378 02/24	\$ 70.22
Withlacoochee River Electric Cooperative, Inc.	20240308-4	2189383 02/24	Electric 2189383 02/24	\$ 40.16
Withlacoochee River Electric Cooperative, Inc.	20240308-5	2189381 02/24	Electric 2189381 02/24	\$ <u>40.16</u>
<b>Report Total</b>				<b>\$ <u>48,855.49</u></b>

5540 Rio Vista Dr  
Clearwater FL 33760-3107  
United States

**Invoice #:** INV12770  
**Status:** Open

### Bill To

WatersEdge CDD  
3434 COLWELL AVE.SUITE 200  
Tampa FL 33614  
United States

Date	Terms	Due Date
3/4/2024		3/4/2024

Item	Qty	Rate	Amount
<b>Engage SMA Subscription Fee</b> Service Period 3/4/2024 - 4/3/2024	1	\$206.90	\$206.90
<b>Engage SMA Per Door</b> Service Period 3/4/2024 - 4/3/2024	1	\$0.00	\$0.00

<b>Subtotal</b>	\$206.90
<b>Tax Total (%)</b>	\$0.00
<b>Total</b>	\$206.90
<b>Amount Due</b>	\$206.90



### To pay by check, use remit address below:

TOPS Software of Florida, LLC Dba Enumerate  
PO Box 952684  
ATLANTA GA 31192-2684

For billing inquires, please email: [billingteam@goenumerate.com](mailto:billingteam@goenumerate.com)

**Waters Edge CDD**

Meeting Date: February 22, 2024

**SUPERVISOR PAY REQUEST**

<u>Name of Board Supervisor</u>	<u>Check if paid</u>	
Teri Geney	X	TG022224
George Anastasopoulos	X	GA022224
Gabriel D. Papadopoulos	X	GP022224
Timothy Haslett	X	TH022224
Jason Peterson	X	JP022224

*NOTE: Supervisors are only paid if checked.*

**RECEIVED**  
03/06/24

**EXTENDED MEETING TIMECARD**

Meeting Start Time:	3:31 pm
Meeting End Time:	5:16 pm
Total Meeting Time:	<u>1 hr 45 mins</u>

1 hr 45 mins

Time Over 3 Hours:	0
--------------------	---

Total at \$175 per Hour:	0
--------------------------	---

**ADDITIONAL OR CONTINUED MEETING TIMECARD**

Meeting Date:	<del>                    </del>
Additional or Continued Meeting?	<del>                    </del>
Total Meeting Time:	<del>                    </del>
Total at \$175 per Hour:	<del>                    </del>

Business Mileage Round Trip	
IRS Rate per Mile	\$0.655
Mileage to Charge	

DM Signature: \_\_\_\_\_

*M. Huber*



www.ghsenvironmental.com  
 P.O. Box 55802  
 St Petersburg, FL 33732

# Invoice

Date: 2/28/2024  
 Invoice #: 2024-178

To:

Waters Edge CDD  
 5844 Old Pasco Rd.  
 Suite 100  
 Wesley Chapel, FL 33544

Project: Waters Edge  
 Proposal #: 13-124;2024  
 P.O. #:

Due Date	Service Date:
3/29/2024	February 2024

Task #	Description	Project Compl...	Amount
Task 1	Monthly Meter Readings	16.67%	142.00

**RECEIVED**  
 02/28/24

<b>PAYMENT DUE WITHIN 30 DAYS OF INVOICING DATE</b>	<b>Total</b>	<b>\$142.00</b>
<p>Please make all checks payable to GHS Environmental          There will be a 10% charge per month on any payments          received after the initial 30 days. If you have any questions          concerning this invoice please contact us at 727-667-6786.  <b>THANK YOU FOR YOUR BUSINESS!</b></p>	Payments/Credits	\$0.00
	<b>Balance Due</b>	<b>\$142.00</b>





Irrigation Technical Services,  
 3330 36th Avenue North  
 St Petersburg FL 33713  
 727-521-3320

# Service Invoice

Invoice#: 33039  
 Date: 03/04/2024  
 Record#: 32020

**Billed To:** Waters Edge CDD  
 c/o Rizzetta and Company  
 5844 Old Pasco Road Suite 100  
 Wesley Chapel FL 33544

**Project:** Waters Edge  
 9019 Creedmoor Lane  
 New Port Richey FL 34654

**Due Date:** 04/03/2024

**Employee:**

**Order#:**

Assembly#	Part#	Description	Quantity	Price	Ext Price	Sales Tax
		Waters Edge Water Management February 2024	1.0000	550.000000	550.00	N

**Notes:**

For your convenience, Master Card and Visa are accepted for most payments.  
 Call ITS at 727-521-3320 for details

*Thank you for your prompt payment!*

**RECEIVED**  
 03/04/24

Non-Taxable Amount:	550.00
Taxable Amount:	0.00
Sales Tax:	0.00
<b>Amount Due</b>	<b>550.00</b>



PASCO COUNTY UTILITIES  
 CUSTOMER INFORMATION & SERVICES  
 P.O. BOX 2139  
 NEW PORT RICHEY, FL 34656-2139

LAND O' LAKES  
 NEW PORT RICHEY  
 DADE CITY

(813) 235-6012  
 (727) 847-8131  
 (352) 521-4285

UtilCustServ@MyPasco.net  
 Pay By Phone: 1-855-786-5344

**RECEIVED**  
 FEB 15 2024



41 0 1  
 45-46024

WATERS EDGE CDD

Service Address: **9019 CREEDMOOR RECLAIM LANE**

Bill Number: 19892850

Billing Date: 2/13/2024

Billing Period: 12/22/2023 to 1/23/2024

BY: .....

Account #	Customer #
1006710	01381392
Please use the 15-digit number below when making a payment through your bank	
100671001381392	

**New Water, Sewer, Reclaim rates, fees, and charges took effect Oct. 1, 2023.**  
 Please visit [bit.ly/pcurates](http://bit.ly/pcurates) for details.

Service	Meter #	Previous		Current		# of Days	Consumption in thousands
		Date	Read	Date	Read		
Reclaim	180194286	12/22/2023	168826	1/23/2024	183445	32	14619

Usage History

	Reclaimed
January 2024	14619
December 2023	8290
November 2023	14461
October 2023	18610
September 2023	19864
August 2023	15370
July 2023	16905
June 2023	18122
May 2023	16469
April 2023	21594
March 2023	16685
February 2023	2456

Transactions

Previous Bill	3,150.20
Payment 01/29/24	-3,150.20 CR
<b>Balance Forward</b>	0.00
Current Transactions	
Reclaimed	
Reclaimed	14,619 Thousand Gals X \$0.38 5,555.22
<b>Total Current Transactions</b>	5,555.22
<b>TOTAL BALANCE DUE</b>	<b>\$5,555.22</b>

Please return this portion with payment

TO PAY ONLINE, VISIT [pascoeasy pay.pascocountyfl.net](http://pascoeasy pay.pascocountyfl.net)

Check this box if entering change of mailing address on back.

Account #	1006710
Customer #	01381392
Balance Forward	0.00
Current Transactions	5,555.22

<b>Total Balance Due</b>	<b>\$5,555.22</b>
<b>Due Date</b>	<b>3/1/2024</b>

10% late fee will be applied if paid after due date

The Total Due will be electronically transferred on 03/01/2024.



WATERS EDGE CDD  
 3434 COLWELL AVENUE SUITE 200  
 TAMPA FL 33614-8390

PASCO COUNTY UTILITIES  
 CUSTOMER INFORMATION & SERVICES  
 P.O. BOX 2139  
 NEW PORT RICHEY, FL 34656-2139

01381392310067109198928506000555222

**Rizzetta & Company, Inc.**  
 3434 Colwell Avenue  
 Suite 200  
 Tampa FL 33614

**Invoice**

Date	Invoice #
3/1/2024	INV0000087899

**Bill To:**

WATERS EDGE CDD - PC 3434 Colwell Avenue, Suite 200 Tampa FL 33614
--

Services for the month of	Terms	Client Number
March	Upon Receipt	00345

Description	Qty	Rate	Amount
Accounting Services	1.00	\$1,147.00	\$1,147.00
Administrative Services	1.00	\$430.08	\$430.08
Email Accounts, Admin & Maintenance	5.00	\$20.00	\$100.00
Financial & Revenue Collections	1.00	\$477.33	\$477.33
Management Services	1.00	\$2,077.42	\$2,077.42
Website Compliance & Management	1.00	\$100.00	\$100.00
		<b>Subtotal</b>	\$4,331.83
		<b>Total</b>	\$4,331.83

**RECEIVED**  
 02/27/24

# INVOICE

Sitex Aquatics, LLC  
PO Box 917  
Parrish, FL 34219

office@sitexaquatics.com  
+1 (813) 564-2322



## Waters Edge CDD

### Bill to

Waters Edge CDD  
Rizzetta  
3434 Colwell Ave, Ste 200  
Tampa, FL 33614

### Ship to

Waters Edge CDD  
Rizzetta  
3434 Colwell Ave, Ste 200  
Tampa, FL 33614

### Invoice details

Invoice no.: 8068-B  
Terms: Net 30  
Invoice date: 02/29/2024  
Due date: 03/30/2024

#	Date	Product or service	SKU	Qty	Rate	Amount
1.		<b>Additional Services</b> Hard wood Plant material removal from Littoral Shelf		1	\$485.00	\$485.00

**Total** **\$485.00**

**RECEIVED**  
02/29/24

# INVOICE

Sitex Aquatics, LLC  
PO Box 917  
Parrish, FL 34219

office@sitexaquatics.com  
+1 (813) 564-2322



## Waters Edge CDD

### Bill to

Waters Edge CDD  
3434 Colwell Ave, Ste 200  
Tampa, FL 33614

### Ship to

Waters Edge CDD  
Rizzetta  
3434 Colwell Ave, Ste 200  
Tampa, FL 33614

### Invoice details

Invoice no.: 8089-B  
Terms: Net 30  
Invoice date: 03/01/2024  
Due date: 03/31/2024

#	Date	Product or service	SKU	Qty	Rate	Amount
1.		<b>LM- Waters Edge CDD</b> Monthly Lake Maintenance-52 Waterways		1	\$2,185.00	\$2,185.00
					<b>Total</b>	<b>\$2,185.00</b>

**RECEIVED**  
03/01/24



# INVOICE

Project Information	
<b>Project #</b>	2024WTEGDG _Waters Edge
<b>Title</b>	Waters Edge Wall Painting & Repairs
<b>Address</b>	9019 Creedmoor Ln
<b>City, State, Zip</b>	New Port Richey, FL 34654

Prime Contract Invoice	
<b>Contract No.</b>	07196
<b>Invoice No.</b>	07196-001
<b>Invoice Date</b>	20-Mar-2024
<b>Payment Due</b>	20-Mar-2024

Remit To	
<b>Company</b>	Specialized Property Services, Inc
<b>Address</b>	9605 E US Highway 92
<b>City, State, Zip</b>	Tampa, FL 33610
<b>Email</b>	accountspayable@ssgrp247.net
<b>Phone</b>	
<b>Fax</b>	

Bill To	
<b>Contact</b>	Frank Nolte
<b>Company</b>	Waters Edge CDD
<b>Address</b>	3434 Colwell Avenue Suite 200
<b>City, State, Zip</b>	Tampa, FL 33514
<b>Contract/PO #</b>	United States
<b>Phone</b>	
<b>Fax</b>	

### Schedule of Values

Item #	Description	Scheduled Value	Previous Billing	Current Billing	Total Billed	Balance to Finish	%
1	Deposit	25,017.20	0.00	25,017.20	25,017.20	0.00	100.00
2	Waters Edge Wall Painting and Repairs	100,068.80	0.00	0.00	0.00	100,068.80	0
<b>Subtotal =</b>		125,086.00	0.00	25,017.20	25,017.20	100,068.80	20%

**Invoice Total - \$25,017.20**

**RECEIVED**  
03/20/24

# INVOICE

3/1/2024

***Waters Edge Master HOA, Inc.***  
c/o Management and Associates  
720 Brooker Creek Blvd. #206 Oldsmar, FL 34677  
Phone: (813) 433-2000

To:

Waters Edge CDD  
5844 Old Pasco Road, Suite 100  
Wesley Chapel, FL 33544

Due Upon Receipt

Page 1 of 1

<u>Quantity</u>	<u>Vendor</u>	<u>Inv #</u>	<u>Inv Date</u>	<u>Description</u>		<u>Amount</u>
1	Ameriscape	7682	2/1/2024	FEBRUARY LAWN SERVICE	\$	5,725.60
				IRRIGATION	\$	1,281.60
				TREE TRIMMING	\$	214.80
				QUARTERLY FLOWER ROTATION	\$	-
				PEST CONTROL (AGRONOMY)	\$	-
1	PSA	1458	2/1/2024	FEBRUARY 1, 2024 INSPECTION	\$	252.00
3	KEVIN L	NA	NA	Chlorine tab service- \$30.00/week- Kevin Labrum	\$	90.00
				FEB 2, 9, 23 ON VACATION 2/16		
<b>Total:</b>						<b>7,564.00</b>

**RECEIVED**  
03/01/24



**ASI** LANDSCAPE MANAGEMENT

9702 N Harney Rd  
Thonotosassa, FL 33592

Invoice 7682

Date	PO#
02/01/24	
Sales Rep	Terms
House Account	Net 30

Bill To
Rocco Iervasi Water's Edge HOA 9019 Creedmoor Lane New Port Richey, FL 34654

Property Address
Water's Edge HOA 9019 Creedmoor Lane New Port Richey, FL 34654

Item	Qty / UOM	Rate	Ext. Price	Amount
#6989 - Landscape Management with Irrigation & Pruning February 2024				\$18,055.00

Description	Amount
General Maintenance	14,314.00
Irrigation Inspections	3,204.00
Hardwood Pruning	537.00

APPROVED	
ASSOC	WAED
G/L #	8210-007
BKACCT	
OPER	RESV
AMT	18,055.00

Subtotal	\$18,055.00
Sales Tax	\$0.00
<b>Total</b>	<b>\$18,055.00</b>
Credits/Payments	(\$0.00)
<b>Balance Due</b>	<b>\$18,055.00</b>

Current	1-30 Days Past Due	31-60 Days Past Due	61-90 Days Past Due	90+ Days Past Due
\$36,468.05	\$7,950.00	\$0.00	\$0.00	\$0.00



# INVOICE

PSA Horticultural  
8431 Prestwick Pl  
Trinity, FL 34655

tom@psagrounds.com  
(727) 505-1532

# PSA HORTICULTURAL

Water's Edge Homeowners Association C/O Management and Associates

### Bill to

Water's Edge Homeowners Association C/O  
Management and Associates  
720 Brooker Creek Boulevard, Suite 206  
Oldsmar, Florida 34677

### Invoice details


Invoice no.: 1458  
Terms: Net 30  
Invoice date: 02/01/2024  
Due date: 03/02/2024

#	Date	Product or service	SKU	Qty	Rate	Amount
1.	02/01/2024	Water's Edge Landscape Inspection February 2024 Landscape Inspection		1	\$630.00	\$630.00
					<b>Total</b>	<b>\$630.00</b>

### Note to customer

We truly appreciate your business!

PSA Services:  
Specification Development  
Landscape Inspections  
Special Project Consulting

APPROVED	
ASSOC	WATER
G/L #	8020-000
BK ACCT	
OPER	RESV
AMT	630-



Your Touchstone Energy® Cooperative  
P.O. Box 278 • Dade City, Florida 33526-0278

Account Number **2189382** Cycle 17  
Meter Number 62225594  
Customer Number 20096167  
Customer Name WATERS EDGE CDD

Bill Date **02/26/2024**  
Amount Due **40.26**  
Current Charges Due **03/18/2024**

District Office Serving You  
Bayonet Point

See Reverse Side For More Information

Service Address 11430 BIDDEFORD PL  
Service Description WELL  
Service Classification General Service Non-Demand

ELECTRIC SERVICE								
From		To		Multiplier	Dem. Reading	KW Demand	kWh Used	
Date	Reading	Date	Reading					
01/22	11434	02/21	11435				1	

Comparative Usage Information  
Average kWh

Period	Days	Per Day
Feb 2024	30	0
Jan 2024	33	0
Feb 2023	28	51

BILLS ARE DUE WHEN RENDERED  
A 1.5 percent, but not less than \$5, late charge will apply to unpaid balances as of 5:00 p.m. on the due date shown on this bill.

Previous Balance 40.16  
Payment 40.16CR  
Balance Forward 0.00

Customer Charge 39.16  
Energy Charge 1 KWH @ 0.05017 0.05  
Fuel Adjustment 1 KWH @ 0.04000 0.04  
FL Gross Receipts Tax 1.01

Total Current Charges 40.26  
Total Due E.F.T. 40.26



2 0 0 9 6 1 6 7

You have 24-hour access to manage your account on-line through Smarthub at [www.wrec.net](http://www.wrec.net). If you would like to make a payment using your credit card, please call 844-209-7166. This number is WREC's Secure Pay-By-Phone system.

**DO NOT PAY**  
Total amount will be electronically transferred on or after 03/08/2024.



Your Touchstone Energy® Cooperative  
P.O. Box 278 • Dade City, Florida 33526-0278

Please **Detach and Return** This Portion With Your Payment To Ensure Accurate Posting.

See Reverse Side For Mailing Instructions

Bill Date: 02/26/2024

District: BP17

Use above space for address change ONLY.

2189382 BP17  
WATERS EDGE CDD  
3434 COLWELL AVE STE 200  
TAMPA FL 33614-8390

Electronic Funds Transfer on or after	<b>03/08/2024</b>
<b>TOTAL CHARGES DUE</b>	<b>40.26</b>
<b>DO NOT PAY</b>	

000218938200000402600000402609



Your Touchstone Energy® Cooperative  
P.O. Box 278 • Dade City, Florida 33526-0278

Account Number **2189384** Cycle 17  
Meter Number 49382988  
Customer Number 20096167  
Customer Name WATERS EDGE CDD

Bill Date **02/26/2024**  
Amount Due **1,627.54**  
Current Charges Due **03/18/2024**

District Office Serving You  
Bayonet Point

See Reverse Side For More Information

Service Address 9136 CREEDMOOR LN  
Service Description WELL  
Service Classification General Service Demand

ELECTRIC SERVICE								
From		To		Multiplier	Dem. Reading	KW Demand	kWh Used	
Date	Reading	Date	Reading					
01/22	37376	02/21	52122		89.05	89	14746	

Comparative Usage Information		
Average kWh		
Period	Days	Per Day
Feb 2024	30	492
Jan 2024	33	427
Feb 2023	28	406

BILLS ARE DUE WHEN RENDERED  
A 1.5 percent, but not less than \$5, late charge will apply to unpaid balances as of 5:00 p.m. on the due date shown on this bill.

Previous Balance 1,524.80  
Payment 1,524.80CR  
Balance Forward 0.00

Customer Charge 44.16  
Demand Charge 89 KW @ 6.15000 547.35  
Energy Charge 14,746 KWH @ 0.02750 405.52  
Fuel Adjustment 14,746 KWH @ 0.04000 589.84  
FL Gross Receipts Tax 40.67

Total Current Charges 1,627.54  
Total Due E.F.T. 1,627.54



2 0 0 9 6 1 6 7

You have 24-hour access to manage your account on-line through Smarthub at [www.wrec.net](http://www.wrec.net). If you would like to make a payment using your credit card, please call 844-209-7166. This number is WREC's Secure Pay-By-Phone system.

**DO NOT PAY**  
Total amount will be electronically transferred on or after 03/08/2024.



Your Touchstone Energy® Cooperative  
P.O. Box 278 • Dade City, Florida 33526-0278

Please **Detach and Return** This Portion With Your Payment To Ensure Accurate Posting.

See Reverse Side For Mailing Instructions

Bill Date: 02/26/2024

District: BP17

Use above space for address change ONLY.

2189384 BP17  
WATERS EDGE CDD  
3434 COLWELL AVE STE 200  
TAMPA FL 33614-8390

Electronic Funds Transfer on or after	<b>03/08/2024</b>
<b>TOTAL CHARGES DUE</b>	<b>1,627.54</b>
<b>DO NOT PAY</b>	

000218938400016275400016275406



Your Touchstone Energy® Cooperative  
P.O. Box 278 • Dade City, Florida 33526-0278

Account Number **2189378** Cycle 17  
Meter Number 40547871  
Customer Number 20096167  
Customer Name WATERS EDGE CDD

Bill Date **02/26/2024**  
Amount Due **70.22**  
Current Charges Due **03/18/2024**

District Office Serving You  
Bayonet Point

See Reverse Side For More Information

Service Address 11909 SLIDELL ST  
Service Description PUMP  
Service Classification General Service Non-Demand

ELECTRIC SERVICE							
From		To		Multiplier	Dem. Reading	KW Demand	kWh Used
Date	Reading	Date	Reading				
01/22	81137	02/21	81462				325

Comparative Usage Information  
Average kWh

Period	Days	Per Day
Feb 2024	30	11
Jan 2024	33	12
Feb 2023	28	11

**BILLS ARE DUE WHEN RENDERED**  
A 1.5 percent, but not less than \$5, late charge will apply to unpaid balances as of 5:00 p.m. on the due date shown on this bill.

Previous Balance **76.97**  
Payment **76.97CR**  
Balance Forward **0.00**

Customer Charge **39.16**  
Energy Charge 325 KWH @ 0.05017 **16.31**  
Fuel Adjustment 325 KWH @ 0.04000 **13.00**  
FL Gross Receipts Tax **1.75**

Total Current Charges **70.22**  
Total Due **70.22** E.F.T.



2 0 0 9 6 1 6 7

You have 24-hour access to manage your account on-line through Smarthub at [www.wrec.net](http://www.wrec.net). If you would like to make a payment using your credit card, please call 844-209-7166. This number is WREC's Secure Pay-By-Phone system.

**DO NOT PAY**  
Total amount will be electronically transferred on or after 03/08/2024.



Your Touchstone Energy® Cooperative  
P.O. Box 278 • Dade City, Florida 33526-0278

Please **Detach and Return** This Portion With Your Payment To Ensure Accurate Posting.

See Reverse Side For Mailing Instructions

Bill Date: **02/26/2024**

District: BP17

Use above space for address change ONLY.

**2189378** BP17  
WATERS EDGE CDD  
3434 COLWELL AVE STE 200  
TAMPA FL 33614-8390

Electronic Funds Transfer on or after <b>03/08/2024</b>
<b>TOTAL CHARGES DUE 70.22</b>
<b>DO NOT PAY</b>

000218937800000702200000702206



Your Touchstone Energy® Cooperative  
P.O. Box 278 • Dade City, Florida 33526-0278

Account Number **2189383** Cycle 17  
Meter Number 57179649  
Customer Number 20096167  
Customer Name WATERS EDGE CDD

Bill Date **02/26/2024**  
Amount Due **40.16**  
Current Charges Due **03/18/2024**

District Office Serving You  
Bayonet Point

See Reverse Side For More Information

Service Address 9101 CREEDMOOR LN  
Service Description PUMP  
Service Classification General Service Non-Demand

ELECTRIC SERVICE								
From		To		Multiplier	Dem. Reading	KW Demand	kWh Used	
Date	Reading	Date	Reading					
01/22	25045	02/21	25045				0	

Comparative Usage Information  
Average kWh

Period	Days	Per Day
Feb 2024	30	0
Jan 2024	33	0
Feb 2023	28	0

BILLS ARE DUE WHEN RENDERED  
A 1.5 percent, but not less than \$5, late charge will apply to unpaid balances as of 5:00 p.m. on the due date shown on this bill.

Previous Balance 40.16  
Payment 40.16CR  
Balance Forward 0.00

Customer Charge 39.16  
FL Gross Receipts Tax 1.00

Total Current Charges 40.16  
Total Due **E.F.T.** 40.16



2 0 0 9 6 1 6 7

You have 24-hour access to manage your account on-line through Smarthub at [www.wrec.net](http://www.wrec.net). If you would like to make a payment using your credit card, please call 844-209-7166. This number is WREC's Secure Pay-By-Phone system.

**DO NOT PAY**  
Total amount will be electronically transferred on or after 03/08/2024.



Your Touchstone Energy® Cooperative  
P.O. Box 278 • Dade City, Florida 33526-0278

Please **Detach and Return** This Portion With Your Payment To Ensure Accurate Posting.

See Reverse Side For Mailing Instructions

Bill Date: 02/26/2024

District: BP17

Use above space for address change ONLY.

2189383 BP17  
WATERS EDGE CDD  
3434 COLWELL AVE STE 200  
TAMPA FL 33614-8390

Electronic Funds Transfer on or after	<b>03/08/2024</b>
<b>TOTAL CHARGES DUE</b>	<b>40.16</b>
<b>DO NOT PAY</b>	

000218938300000401600000401601



Your Touchstone Energy® Cooperative  
P.O. Box 278 • Dade City, Florida 33526-0278

Account Number **2189381** Cycle 17  
Meter Number 62225547  
Customer Number 20096167  
Customer Name WATERS EDGE CDD

Bill Date **02/26/2024**  
Amount Due **40.16**  
Current Charges Due **03/18/2024**

District Office Serving You  
Bayonet Point

See Reverse Side For More Information

Service Address 11406 BELLE HAVEN DR  
Service Description WELL  
Service Classification General Service Non-Demand

ELECTRIC SERVICE								
From		To		Multiplier	Dem. Reading	KW Demand	kWh Used	
Date	Reading	Date	Reading					
01/22	11574	02/21	11574				0	

Comparative Usage Information  
Average kWh

Period	Days	Per Day
Feb 2024	30	0
Jan 2024	33	0
Feb 2023	28	2

BILLS ARE DUE WHEN RENDERED  
A 1.5 percent, but not less than \$5, late charge will apply to unpaid balances as of 5:00 p.m. on the due date shown on this bill.

Previous Balance 40.16  
Payment 40.16CR  
Balance Forward 0.00

Customer Charge 39.16  
FL Gross Receipts Tax 1.00

Total Current Charges 40.16  
Total Due **E.F.T.** 40.16



You have 24-hour access to manage your account on-line through Smarthub at [www.wrec.net](http://www.wrec.net). If you would like to make a payment using your credit card, please call 844-209-7166. This number is WREC's Secure Pay-By-Phone system.

**DO NOT PAY**  
Total amount will be electronically transferred on or after 03/08/2024.



Your Touchstone Energy® Cooperative  
P.O. Box 278 • Dade City, Florida 33526-0278

Please **Detach and Return** This Portion With Your Payment To Ensure Accurate Posting.

See Reverse Side For Mailing Instructions

Bill Date: 02/26/2024

District: BP17

Use above space for address change ONLY.

2189381 BP17  
WATERS EDGE CDD  
3434 COLWELL AVE STE 200  
TAMPA FL 33614-8390

Electronic Funds Transfer on or after	<b>03/08/2024</b>
<b>TOTAL CHARGES DUE</b>	<b>40.16</b>
<b>DO NOT PAY</b>	

000218938100000401600000401605